

eDrawings

Reference Guide for non-SolidWorks users



What is eDrawings?

eDrawings is a free application from SolidWorks which allows you to view 2D and 3D drawing documents, as well as rotate, hide move parts in 3D assemblies.

eDrawings saved out from eDrawings Professional (version used by SolidWorks users) can be used to measure, mark up, and take cross sections not just on flat 2D drawings, but also on 3D parts and assemblies.

When used with PDMWorks, eDrawings is used as a SolidWorks file viewer. It will also let you print SW parts, assemblies and drawings.

This is not just a nifty toy or a gimmick, it is a better way of communicating designs to people who are not professional print readers. It's something that many companies around you are already using with customers and suppliers with great success.

What formats can eDrawings read?

*.SLDPRT, *.SLDASM, *.SLDDRW – SolidWorks Parts, Assemblies and Drawings respectively

*.eDrw, *.ePrt, *.eAsm – These are the eDrawings “native” formats

*.DWG, *.DXF – Autocad and generic 2D drawing formats

What formats can eDrawings save out?

*.eDrw, *.eAsm, *.ePrt – Native eDrawings data

*.exe – Self-executable eDrawing which includes the viewer. This format is frequently rejected by firewalls, because “exe” files can be used as viruses.

*.zip – A compressed archive with the *.exe executable inside it sometimes disguises the exe file so it is not blocked by firewalls. Check with your network administrator and your customer or supplier to see what will work best for them.

*.htm – This is a web format which will cause the web browser of the person who opens it to get the eDrawings browser plug-in from the SolidWorks website. This will only happen the first time an HTML eDrawing is opened on a particular computer. All eDrawings functions can then be done in Internet Explorer. The HTML file contains the eDrawings data.

*.bmp, *.tif, *.jpg – These are image file formats which can be used like static 2D screen captures of the eDrawings window.

*.stl – If an eDrawing has been saved in eDrawings Professional and “Allow STL export” has been enabled, the recipient of an eDrawing can save out STL data. STL is a “stereolithography” format frequently used for rapid prototyping. If you are unsure about this, your data will be more secure if you leave it turned off.

How does eDrawings help me communicate with other non-CAD users?

eDrawings can be used in several different ways:

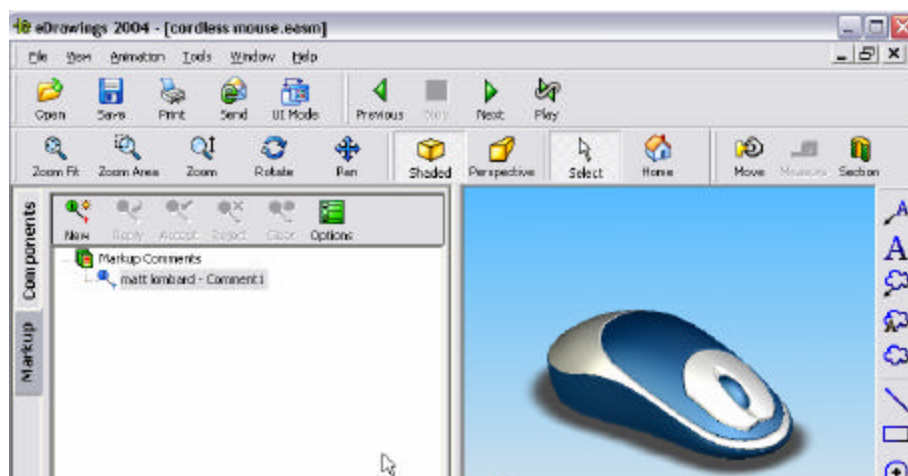
eDrawings Viewer can either be downloaded from the SolidWorks website (www.solidworks.com) for free, or it can be installed without need for registration directly from the SolidWorks installation disks. This viewer will allow you to read all eDrawings formats.

eDrawings Plug-in for Internet Explorer v5.5 or higher is installed from the web automatically if the user opens an HTML format eDrawing.

eDrawings self executable is run from the *.exe format, but is not a good format for emailing through virus protected firewalls.

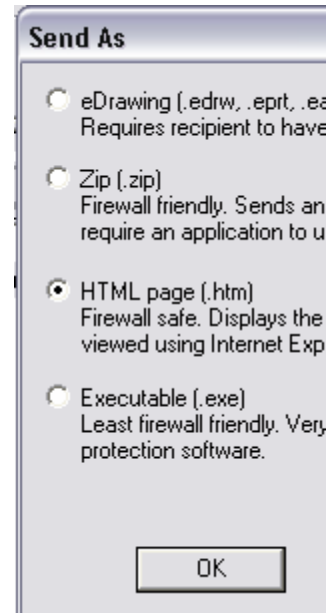
The eDrawings interface

There are a few basics you need to know to become an eDrawings expert.

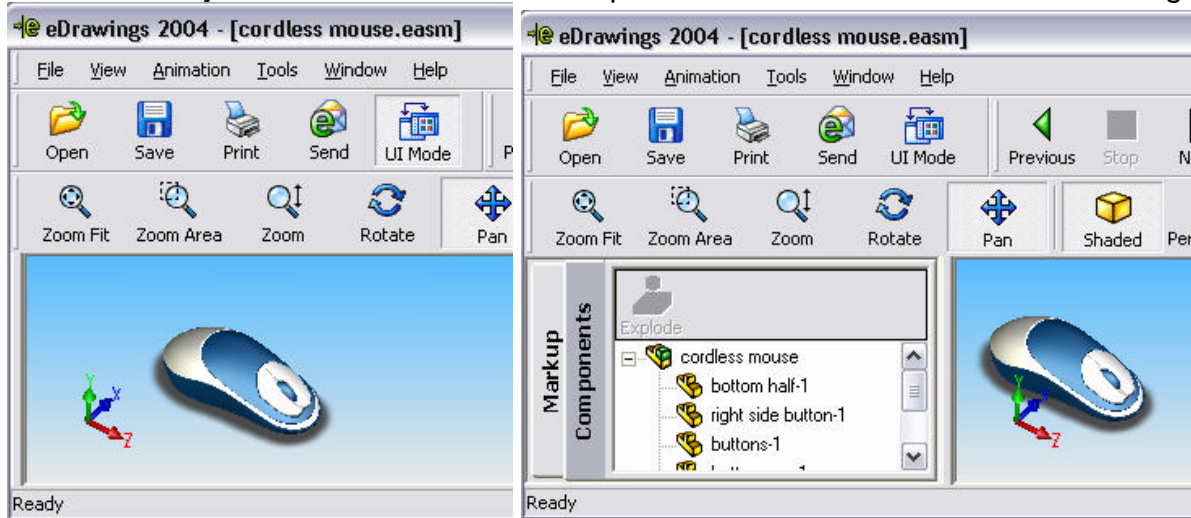


The Open, Save and Print are fairly self-explanatory, and the formats for Open and Save have been covered above.

Send allows you select a format you want to mail, and will then kick off your mail application to send the file as an attachment with an email. The formats have been discussed above.



UI Mode turns on or off the panel to the left which shows either information about parts in an assembly or information about markups that have been made in the eDrawing



Previous, Stop, Next and Play will animate the eDrawing as it changes between the standard views, such as front, left, top, isometric, etc.



View tools are used to zoom in/out, pan and rotate the view .



Zoom Fit zooms so the part, assembly or drawing fills the screen.

Zoom Area allows you to drag the diagonal of a rectangular view area which it then fits to the screen.

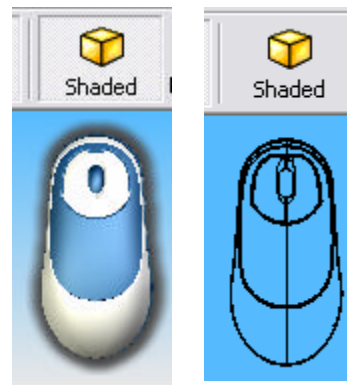
Zoom zooms in and out by dragging with the left mouse button held down. Zooming also happens when you scroll the wheel of a wheel mouse.

Rotate rotates the view when the left mouse button is dragged. You can also rotate without pushing this button by holding down the middle mouse button.

Pan allows you to move the view left and right, up and down.

Shaded

Shaded mode can be toggled off to show the part in wireframe display. Wire frame can make things harder to visualize, but it may make it easier to see internal features.



Perspective

CAD operators generally work without perspective display, but some times, to people who are not accustomed to seeing graphics without perspective, this can be disorienting.



Hitting this button will turn off any other tool that has been selected.



The Home button will reset the view back to the default original view shown when the eDrawing was opened.

Move



The Move tool will allow you to move the parts of an assembly to better visualize the individual parts.

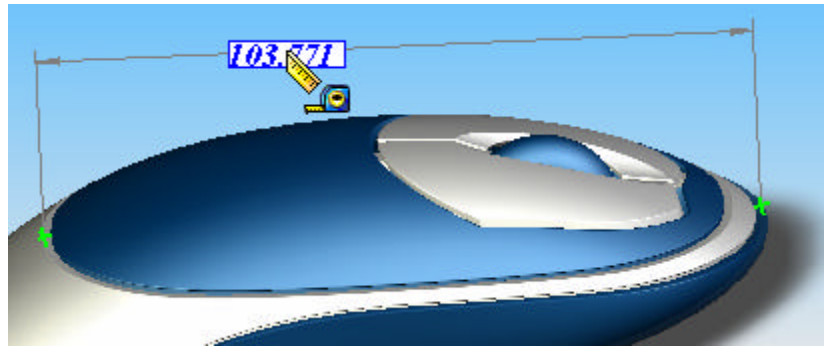
To get the parts back to their original positions, just double click on them.



Measure



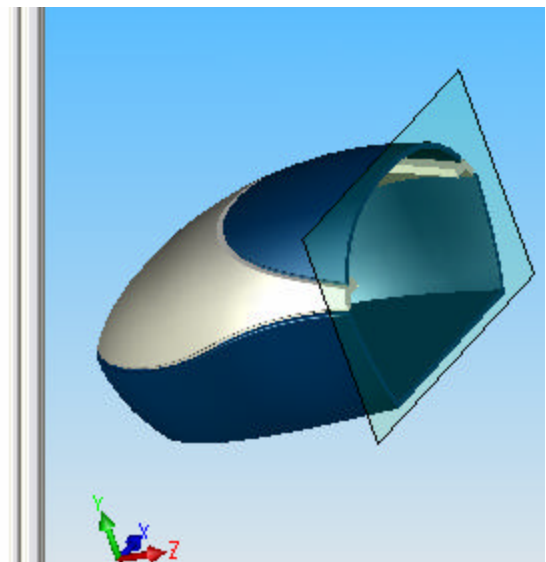
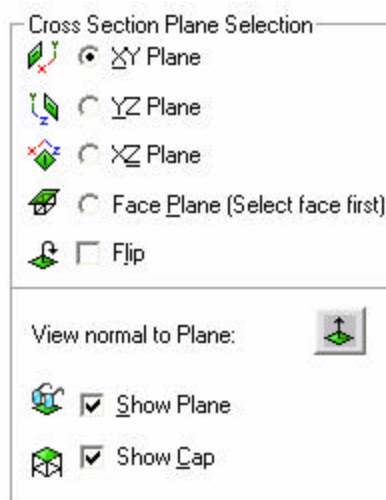
You can measure between points on a part or assembly. This function is only available if an eDrawing has been saved by a user of eDrawings Pro with the Measure/Markup capability turned on.



Section

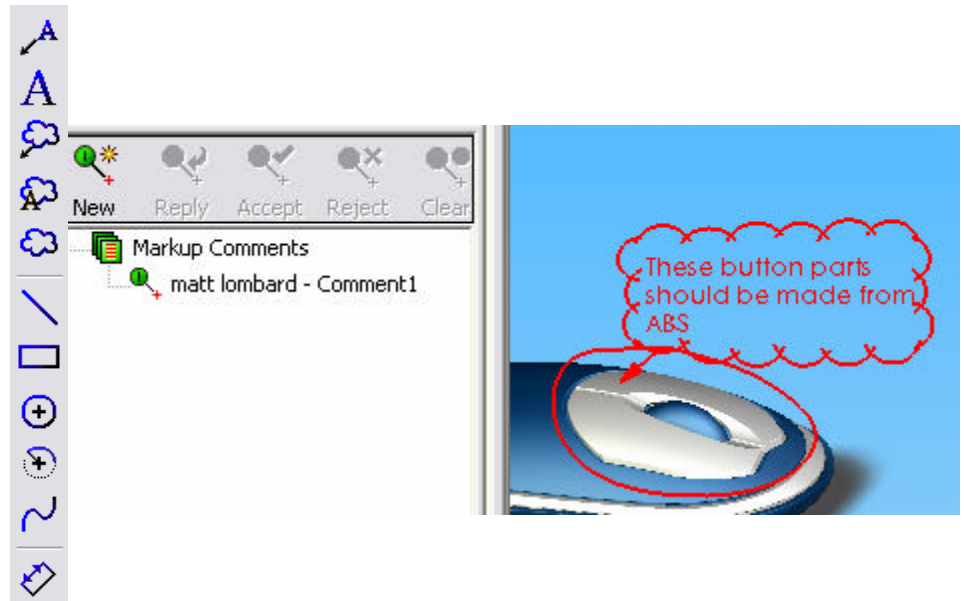


Section allows you to cut through a part or assembly to see how parts are assembled, or see internal features or parts. The section plane can be dragged or reoriented with the control box on the left of the eDrawings window.



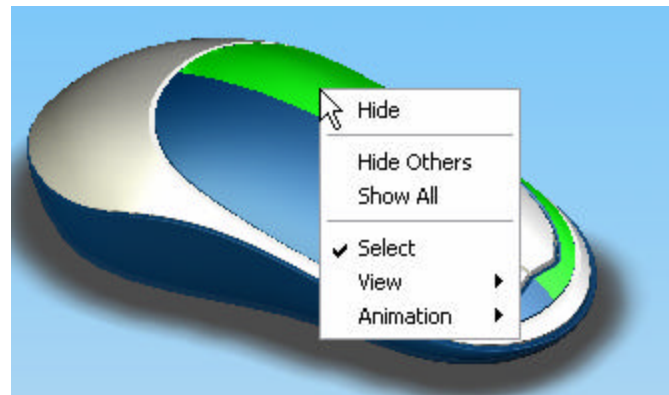
Markup Tools

The Markup tools give you the ability to draw inside the eDrawing, and make text annotations. These annotations are marked with your name, and other people can review the markups and make their own annotations. This is a great tool for when you are constrained to collaborating via email.



Right Mouse Button menu

The Right Mouse Button menu gives you the ability to hide/show parts, select a view and start the view animation.



Large buttons setting

The large buttons can be made smaller by using the View, Toolbars menu pick.

